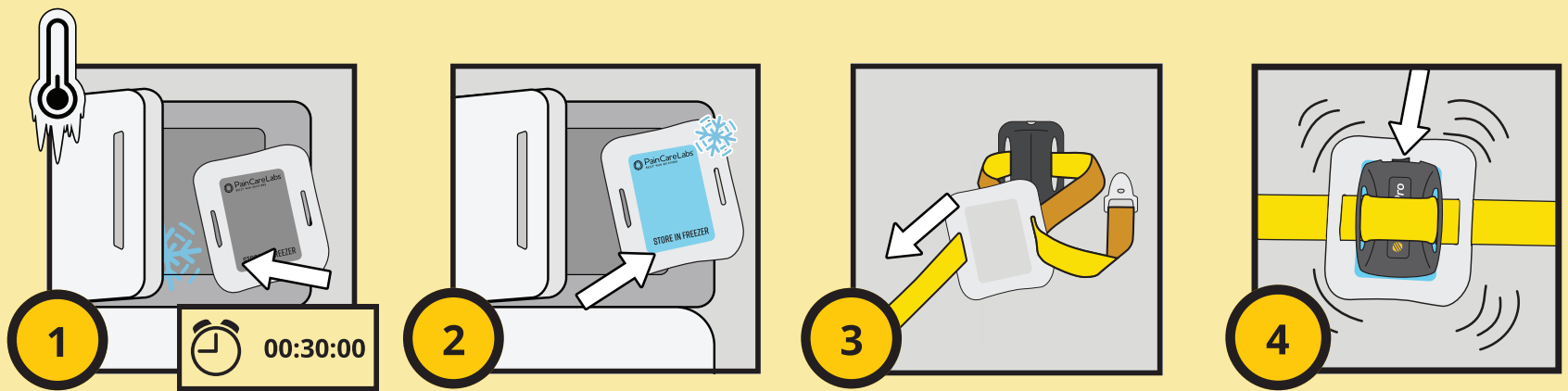


# Buzzy® Pro



## Dialysis/IM/SC

5. Apply Buzzy Pro to the skin.

6. Apply Buzzy Pro to the skin.

7. Apply Buzzy Pro to the skin.

00:00:30 - 00:02:00

## IV

00:00:00

5. Apply Buzzy Pro to the skin.

6. Apply Buzzy Pro to the skin.

Incorrect application (red X): Buzzy Pro is not applied directly to the skin.

Correct application (green checkmark): Buzzy Pro is applied directly to the skin.

Incorrect application (red X): Buzzy Pro is applied to a non-skin surface.

Correct application (green checkmark): Buzzy Pro is applied to a skin surface.

